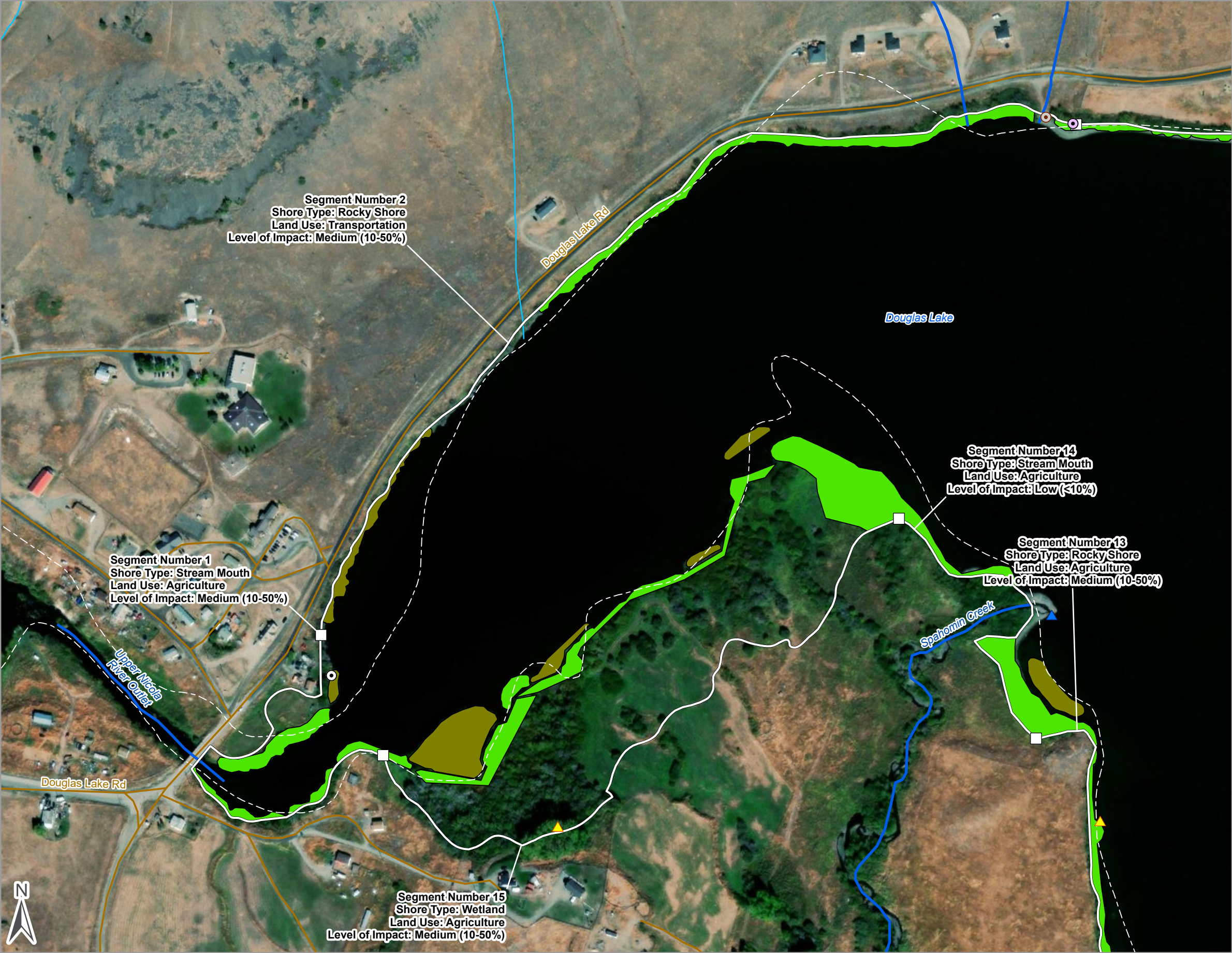


DOUGLAS LAKE
FIMP ASSESSMENT



- Segment Break

Foreshore Inventory Mapping Segment

Digital Road Atlas

Stream Order (1)

Stream Order (2-6)

BC Parcels

Freshwater Atlas Wetlands

FIM Aquatic Vegetation

Emergent Vegetation (EV)

Overhanging Vegetation (OV)

Creek / River Mouth

Stick Nest

Wildlife

Fence

Formal Boat Launch

Informal Boat Launch

Cattle Access

Mooring Buoys

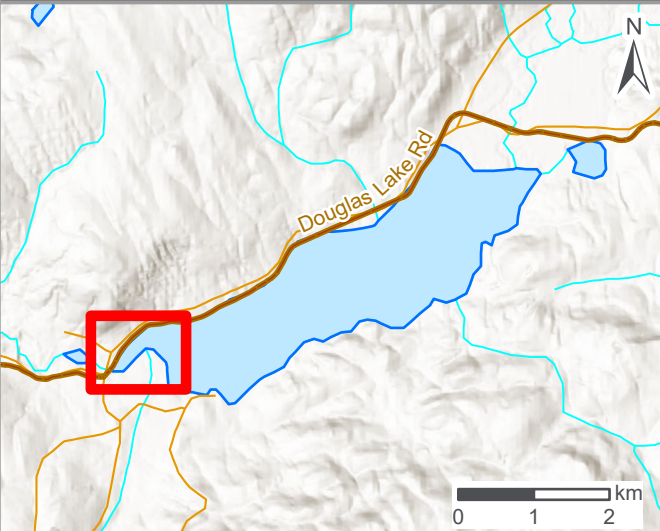
Pump House

Water Infrastructure

Other

References
Aerial Imagery: Vivid Maxar. Imagery Date: 8/31/2016

LOCATION MAP



1:4,000

0 100 200 Meters

Project No.: 240315
Client: Living Lakes Canada
and Upper Nicola Band
NAD 1983 UTM Zone 10N

Date: 2025/03/17
Drawn: MB Check: RP

Figure 2.1



DOUGLAS LAKE
FIMP ASSESSMENT

- Segment Break

Foreshore Inventory Mapping Segment

Digital Road Atlas

Streams and Rivers

Stream Order (1)

Stream Order (2-6)

BC Parcels

Freshwater Atlas Wetlands

FIM Aquatic Vegetation

Emergent Vegetation (EV)

Overhanging Vegetation (OV)
- FIM Points**

Creek / River Mouth

Stick Nest

Wildlife

Fence

Formal Boat Launch

Informal Boat Launch

Cattle Access

Mooring Buoys

Pump House

Water Infrastructure

Other

References

Aerial Imagery: Vivid Maxar. Imagery Date: 8/31/2016

LOCATION MAP



1:5,000

0 130 260 Meters

Project No.: 240315

Client: Living Lakes Canada and Upper Nicola Band

NAD 1983 UTM Zone 10N

Date: 2025/03/17

Drawn: MB Check: RP

Figure 2.2

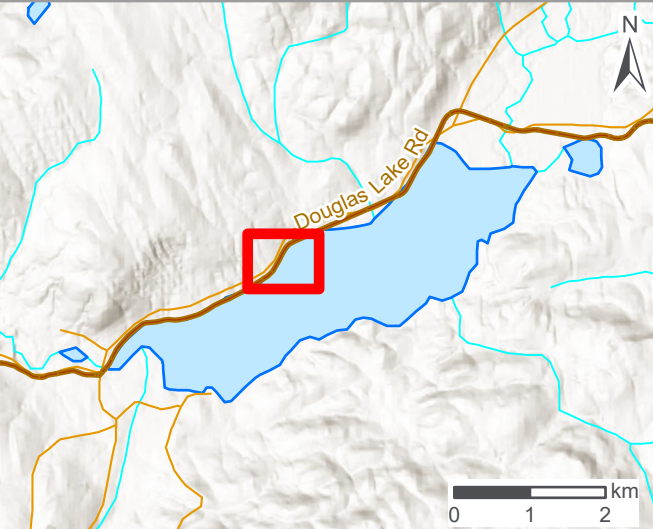


DOUGLAS LAKE
FIMP ASSESSMENT

- | | |
|-------------------------------------|----------------------|
| Segment Break | Creek / River Mouth |
| Foreshore Inventory Mapping Segment | Stick Nest |
| Digital Road Atlas | Wildlife |
| Streams and Rivers | Fence |
| Stream Order (1) | Formal Boat Launch |
| Stream Order (2-6) | Informal Boat Launch |
| BC Parcels | Cattle Access |
| Freshwater Atlas Wetlands | Mooring Buoys |
| FIM Aquatic Vegetation | Pump House |
| Emergent Vegetation (EV) | Water Infrastructure |
| Overhanging Vegetation (OV) | Other |

References
Aerial Imagery: Vivid Maxar. Imagery Date: 8/31/2016

LOCATION MAP



1:3,000
0 80 160 Meters

Project No.: 240315
Client: Living Lakes Canada
and Upper Nicola Band
NAD 1983 UTM Zone 10N

Date: 2025/03/17
Drawn: MB Check: RP

Figure 2.3

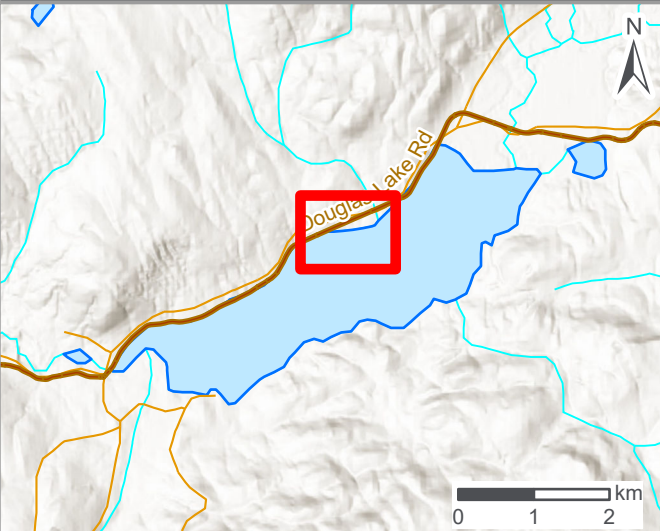


DOUGLAS LAKE
FIMP ASSESSMENT

- | | |
|------------------------------------------------------------------------------------------------------------------------------------------------------------------------------------------------------------------------------------------------------------------------------------------------------------------------------------------------------------------------------------------|----------------------------------------------------------------------------------------------------------------------------------------------------------------------------------------------------------------------------------------------------------------------------------------------------------------------------------------------------------|
| <ul style="list-style-type: none">Segment BreakForeshore Inventory Mapping SegmentDigital Road AtlasStream Order (1)Stream Order (2-6)BC ParcelsFreshwater Atlas WetlandsFIM Aquatic Vegetation<ul style="list-style-type: none">Emergent Vegetation (EV)Overhanging Vegetation (OV) | <ul style="list-style-type: none">FIM Points<ul style="list-style-type: none">Creek / River MouthStick NestWildlifeFenceFormal Boat LaunchInformal Boat LaunchCattle AccessMooring BuoysPump HouseWater InfrastructureOther |
|------------------------------------------------------------------------------------------------------------------------------------------------------------------------------------------------------------------------------------------------------------------------------------------------------------------------------------------------------------------------------------------|----------------------------------------------------------------------------------------------------------------------------------------------------------------------------------------------------------------------------------------------------------------------------------------------------------------------------------------------------------|

References
Aerial Imagery: Vivid Maxar. Imagery Date: 8/31/2016

LOCATION MAP



1:4,000
0 100 200 Meters

Project No.: 240315	Date: 2025/03/17
Client: Living Lakes Canada and Upper Nicola Band	Drawn: MB Check: RP
NAD 1983 UTM Zone 10N	Figure 2.4



DOUGLAS LAKE
FIMP ASSESSMENT

- Segment Break

Foreshore Inventory Mapping Segment

Digital Road Atlas

Streams and Rivers

Stream Order (1)

Stream Order (2-6)

BC Parcels

Freshwater Atlas Wetlands

FIM Aquatic Vegetation

Emergent Vegetation (EV)

Overhanging Vegetation (OV)
- FIM Points**

Creek / River Mouth

Stick Nest

Wildlife

Fence

Formal Boat Launch

Informal Boat Launch

Cattle Access

Mooring Buoys

Pump House

Water Infrastructure

Other

References

Aerial Imagery: Vivid Maxar. Imagery Date: 8/31/2016

LOCATION MAP



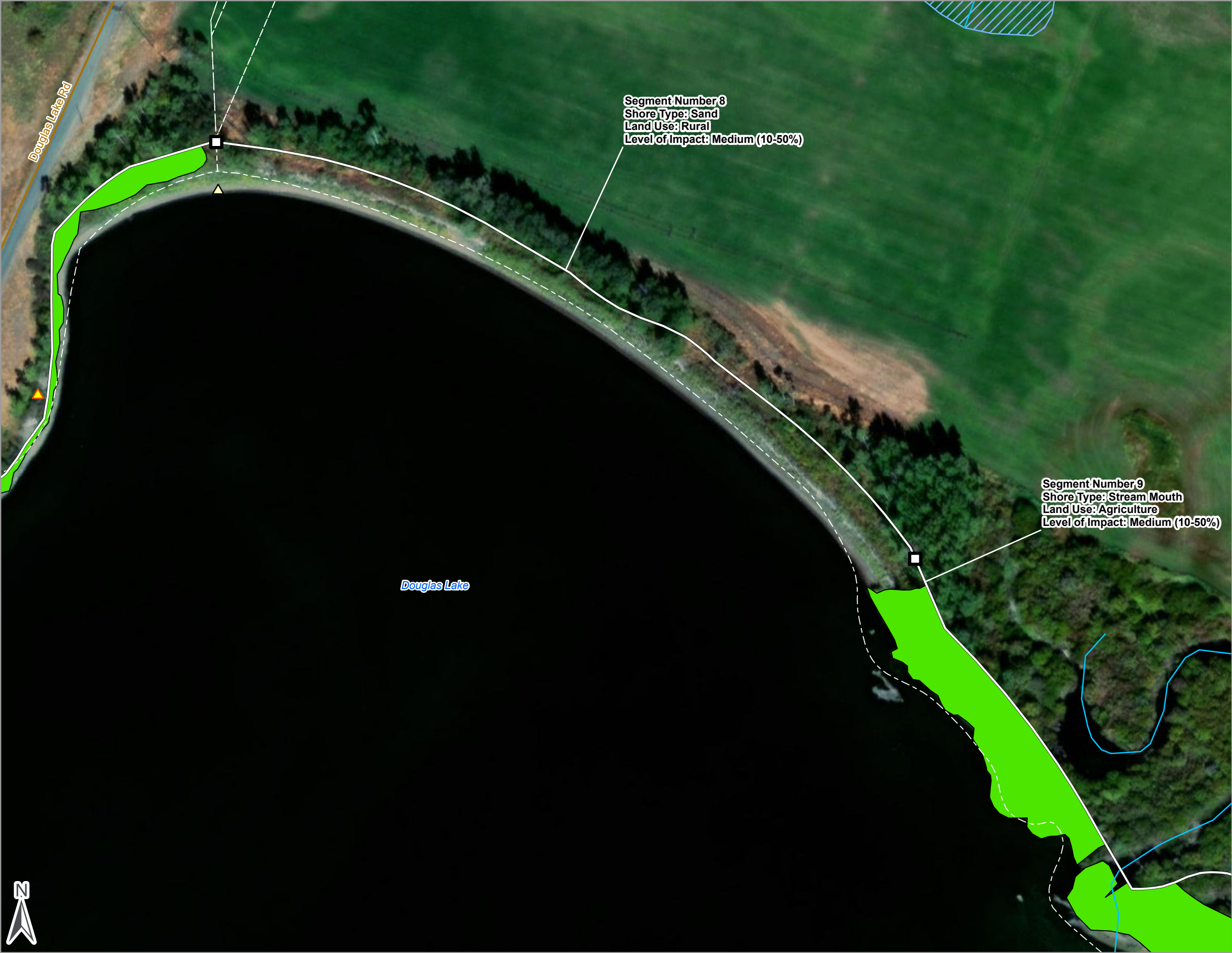
1:5,000

0 130 260 Meters

Project No.: 240315
Client: Living Lakes Canada
and Upper Nicola Band
NAD 1983 UTM Zone 10N

Date: 2025/03/17
Drawn: MB Check: RP

Figure 2.5



DOUGLAS LAKE
FIMP ASSESSMENT

- Segment Break

Foreshore Inventory Mapping Segment

Digital Road Atlas

Streams and Rivers

Stream Order (1)

Stream Order (2-6)

BC Parcels

Freshwater Atlas Wetlands

FIM Aquatic Vegetation

Emergent Vegetation (EV)

Overhanging Vegetation (OV)
- FIM Points**

Creek / River Mouth

Stick Nest

Wildlife

Fence

Formal Boat Launch

Informal Boat Launch

Cattle Access

Mooring Buoys

Pump House

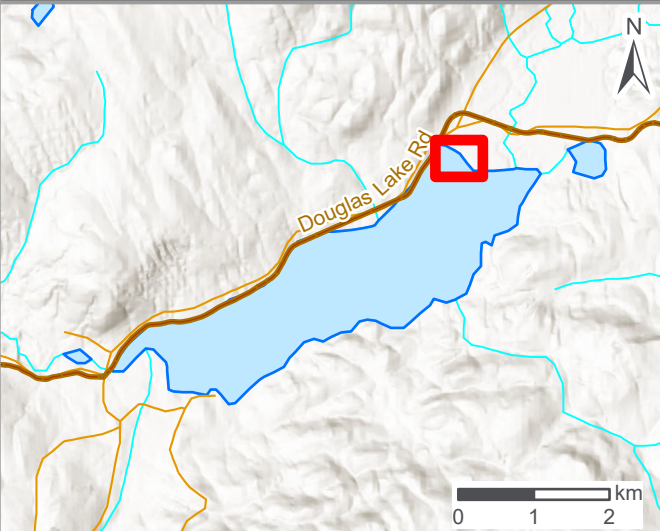
Water Infrastructure

Other

References

Aerial Imagery: Vivid Maxar. Imagery Date: 8/31/2016

LOCATION MAP



1:2,000

0 50 100 Meters

Project No.: 240315
Client: Living Lakes Canada
and Upper Nicola Band
NAD 1983 UTM Zone 10N

Date: 2025/03/17
Drawn: MB Check: RP

Figure 2.6



DOUGLAS LAKE
FIMP ASSESSMENT

- Segment Break

Foreshore Inventory Mapping Segment

Digital Road Atlas

Streams and Rivers

Stream Order (1)

Stream Order (2-6)

BC Parcels

Freshwater Atlas Wetlands

FIM Aquatic Vegetation

Emergent Vegetation (EV)

Overhanging Vegetation (OV)
- FIM Points**

Creek / River Mouth

Stick Nest

Wildlife

Fence

Formal Boat Launch

Informal Boat Launch

Cattle Access

Mooring Buoys

Pump House

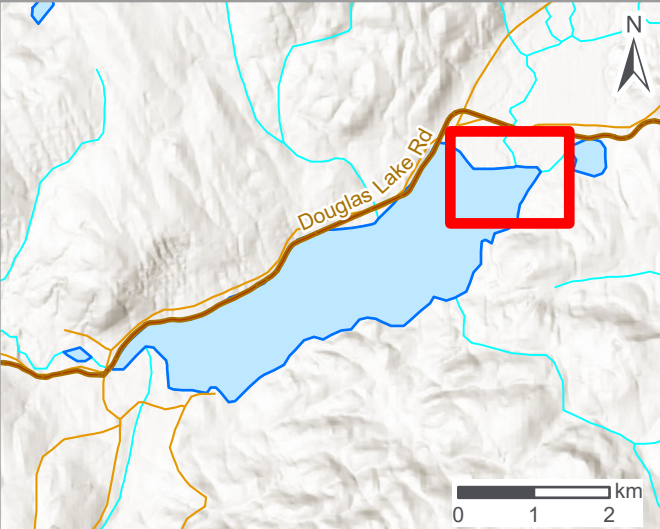
Water Infrastructure

Other

References

Aerial Imagery: Vivid Maxar. Imagery Date: 8/31/2016

LOCATION MAP



1:5,000

0 130 260 Meters

Project No.: 240315
Client: Living Lakes Canada
and Upper Nicola Band
NAD 1983 UTM Zone 10N

Date: 2025/03/17
Drawn: MB Check: RP

Figure 2.7



DOUGLAS LAKE
FIMP ASSESSMENT

- Segment Break

Foreshore Inventory Mapping Segment

Digital Road Atlas

Streams and Rivers

Stream Order (1)

Stream Order (2-6)

BC Parcels

Freshwater Atlas Wetlands

FIM Aquatic Vegetation

Emergent Vegetation (EV)

Overhanging Vegetation (OV)
- FIM Points**

Creek / River Mouth

Stick Nest

Wildlife

Fence

Formal Boat Launch

Informal Boat Launch

Cattle Access

Mooring Buoys

Pump House

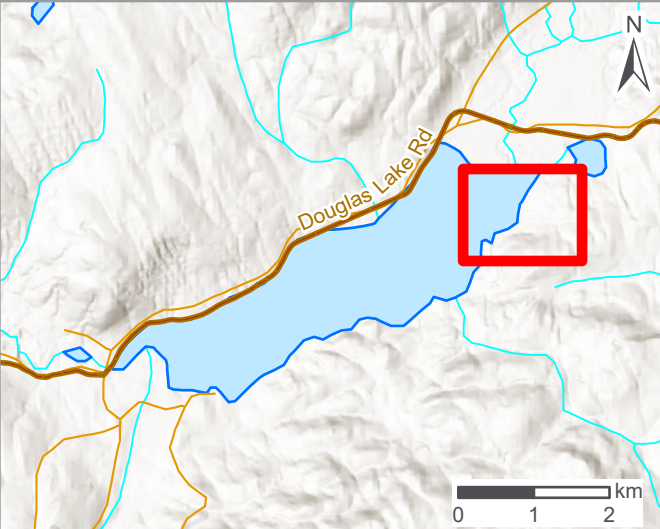
Water Infrastructure

Other

References

Aerial Imagery: Vivid Maxar. Imagery Date: 8/31/2016

LOCATION MAP



1:5,000

0 130 260 Meters

Project No.: 240315
Client: Living Lakes Canada
and Upper Nicola Band
NAD 1983 UTM Zone 10N

Date: 2025/03/17
Drawn: MB Check: RP

Figure 2.8

DOUGLAS LAKE
FIMP ASSESSMENT

- Segment Break

Foreshore Inventory Mapping Segment

Digital Road Atlas

Streams and Rivers

Stream Order (1)

Stream Order (2-6)

BC Parcels

Freshwater Atlas Wetlands

FIM Aquatic Vegetation

Emergent Vegetation (EV)

Overhanging Vegetation (OV)

FIM Points

Creek / River Mouth

Stick Nest

Wildlife

Fence

Formal Boat Launch

Informal Boat Launch

Cattle Access

Mooring Buoys

Pump House

Water Infrastructure

Other

References
Aerial Imagery: Vivid Maxar. Imagery Date: 8/31/2016

LOCATION MAP

The location map shows the regional context of Douglas Lake. The lake is depicted in light blue, surrounded by a topographic relief map. A red rectangular box highlights the specific shoreline segment being assessed. Douglas Lake Rd is labeled on the map. A north arrow and a scale bar (0 to 2 km) are included.

1:5,000
0 130 260 Meters

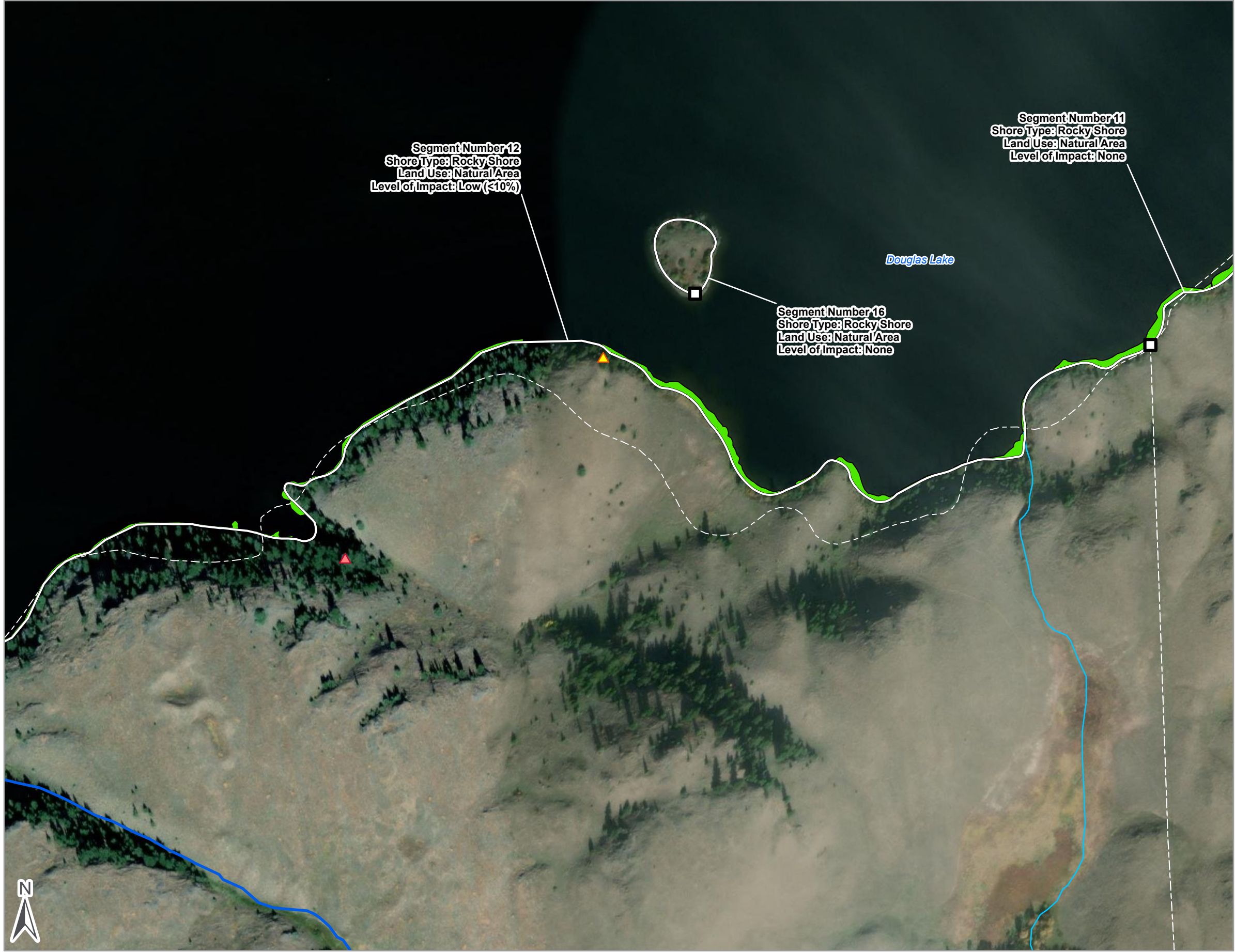
Project No.: 240315
Client: Living Lakes Canada
and Upper Nicola Band
NAD 1983 UTM Zone 10N

Date: 2025/03/17
Drawn: MB Check: RP

Figure 2.9

The main map is an aerial photograph of Douglas Lake and its shoreline. Segment 11 is highlighted with a thick green line, indicating overhanging vegetation. Segment 12 is highlighted with a thick yellow line, indicating emergent vegetation. A dashed white line marks the segment break. A text box for Segment 11 provides details: Segment Number 11, Shore Type: Rocky Shore, Land Use: Natural Area, Level of Impact: None. Another text box for Segment 12 provides details: Segment Number 12, Shore Type: Rocky Shore, Land Use: Natural Area, Level of Impact: Low (<10%). A north arrow is located in the bottom left corner.

DOUGLAS LAKE
FIMP ASSESSMENT



- | | |
|-------------------------------------|----------------------|
| Segment Break | Creek / River Mouth |
| Foreshore Inventory Mapping Segment | Stick Nest |
| Digital Road Atlas | Wildlife |
| Streams and Rivers | Fence |
| Stream Order (1) | Formal Boat Launch |
| Stream Order (2-6) | Informal Boat Launch |
| BC Parcels | Cattle Access |
| Freshwater Atlas Wetlands | Mooring Buoys |
| FIM Aquatic Vegetation | Pump House |
| Emergent Vegetation (EV) | Water Infrastructure |
| Overhanging Vegetation (OV) | Other |

References
Aerial Imagery: Vivid Maxar. Imagery Date: 8/31/2016

LOCATION MAP



1:4,000
0 100 200 Meters

Project No.: 240315	Date: 2025/03/17
Client: Living Lakes Canada and Upper Nicola Band	Drawn: MB Check: RP
NAD 1983 UTM Zone 10N	Figure 2.10

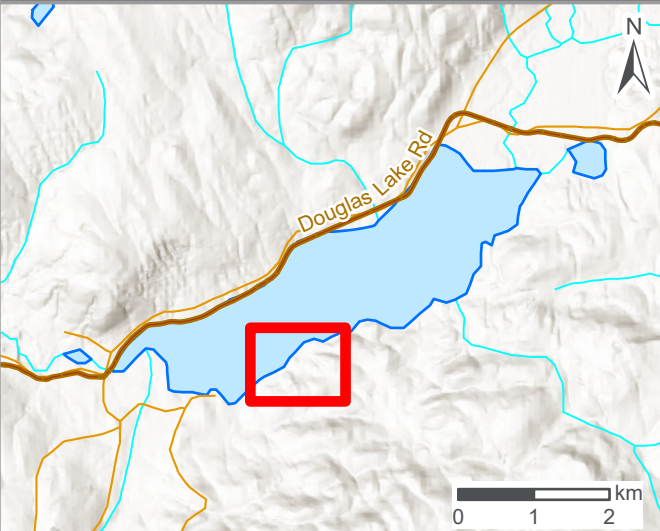
DOUGLAS LAKE
FIMP ASSESSMENT



- | | |
|-------------------------------------|----------------------|
| Segment Break | Creek / River Mouth |
| Foreshore Inventory Mapping Segment | Stick Nest |
| Digital Road Atlas | Wildlife |
| Streams and Rivers | Fence |
| Stream Order (1) | Formal Boat Launch |
| Stream Order (2-6) | Informal Boat Launch |
| BC Parcels | Cattle Access |
| Freshwater Atlas Wetlands | Mooring Buoys |
| FIM Aquatic Vegetation | Pump House |
| Emergent Vegetation (EV) | Water Infrastructure |
| Overhanging Vegetation (OV) | Other |

References
Aerial Imagery: Vivid Maxar. Imagery Date: 8/31/2016

LOCATION MAP



1:4,000
0 100 200 Meters

Project No.: 240315	Date: 2025/03/17
Client: Living Lakes Canada and Upper Nicola Band	Drawn: MB Check: RP
NAD 1983 UTM Zone 10N	Figure 2.11



DOUGLAS LAKE
FIMP ASSESSMENT

- Segment Break

Foreshore Inventory Mapping Segment

Digital Road Atlas

Streams and Rivers

 - Stream Order (1)
 - Stream Order (2-6)
 - BC Parcels
 - Freshwater Atlas Wetlands

FIM Aquatic Vegetation

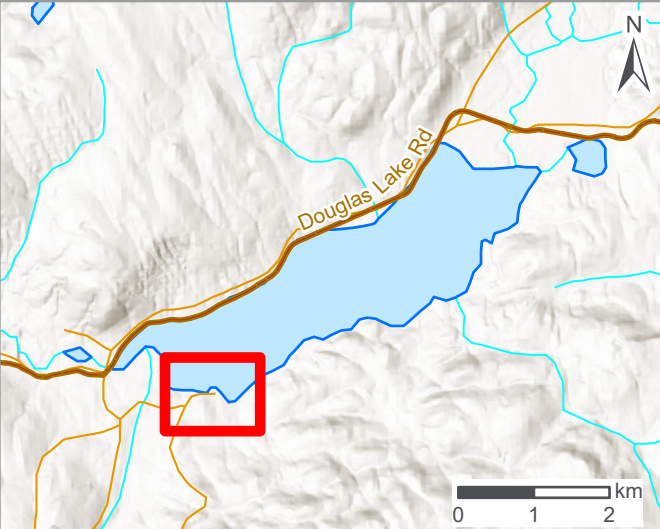
 - Emergent Vegetation (EV)
 - Overhanging Vegetation (OV)
- FIM Points**

 - Creek / River Mouth
 - Stick Nest
 - Wildlife
 - Fence
 - Formal Boat Launch
 - Informal Boat Launch
 - Cattle Access
 - Mooring Buoys
 - Pump House
 - Water Infrastructure
 - Other

References

Aerial Imagery: Vivid Maxar. Imagery Date: 8/31/2016

LOCATION MAP



1:4,000

0 100 200 Meters

Project No.: 240315
Client: Living Lakes Canada
and Upper Nicola Band
NAD 1983 UTM Zone 10N

Date: 2025/03/17
Drawn: MB Check: RP

Figure 2.12